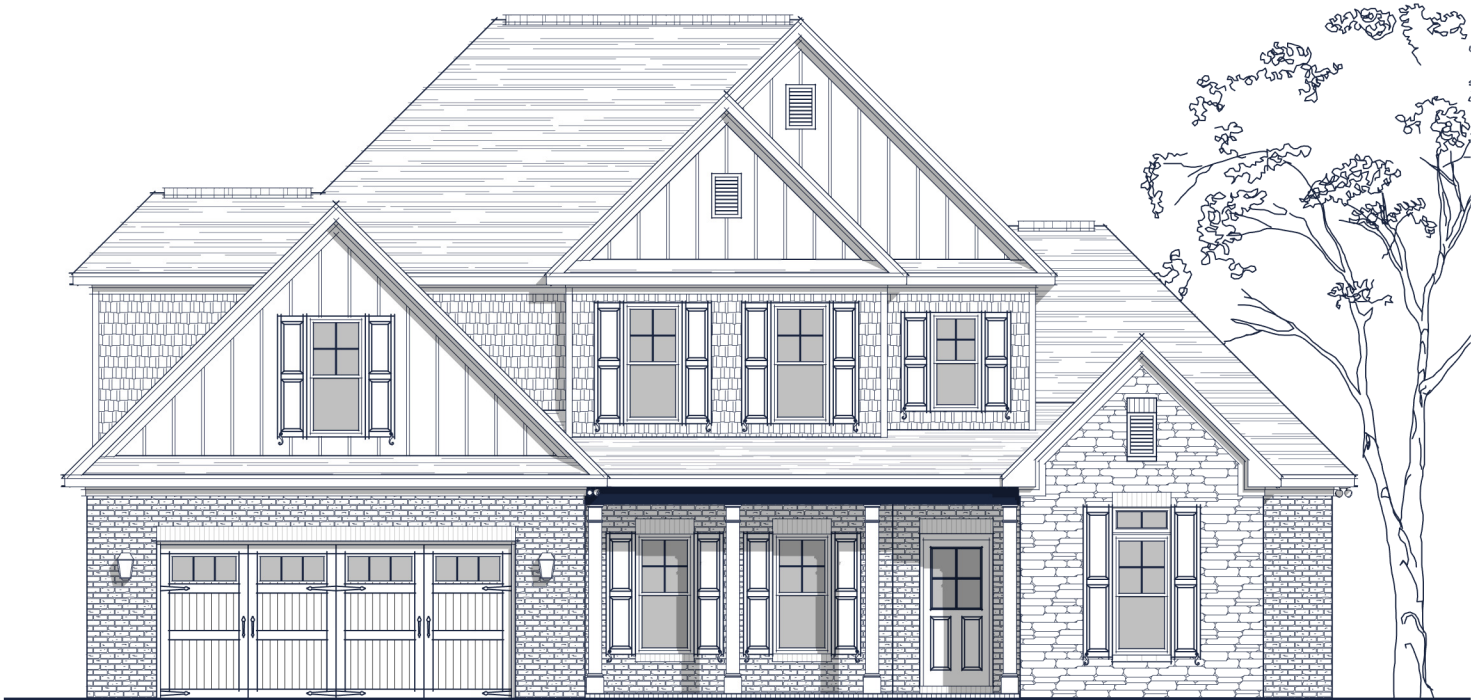




ISENHOUR  
HOMES

# FLOOR PLAN: BRADLEY TRANSITIONAL



## Specs:

Bedrooms: 4  
 Bathrooms: 3.5  
 Square Footage: 3,195 Sq.Ft.  
 First Level: 1,785 Sq.Ft.  
 Second Level: 1,410 Sq.Ft.  
 Width: 56'-8"  
 Depth: 55'-4"

## Options Shown:

- 1 Covered / Screened in Porch
- 2 Sunroom (Adds 161 Sq.Ft.)
- 3 1'-0" Wider Garage w/ Two Doors (Adds 35 Sq.Ft.)
- 4 2'-0" Garage Extension (Adds 45 Sq.Ft.)
- 5 Side Load Garage
- 6 Drop Zone Built-in
- 7 Study w/ 15 Lite Doors
- 8 Bath-2 Pocket Door
- 9 Bath-3 Double Vanity
- 10 Owners Bath Luxury Layout
- 11 Sidewall Fireplace
- 12 Butlers Pantry

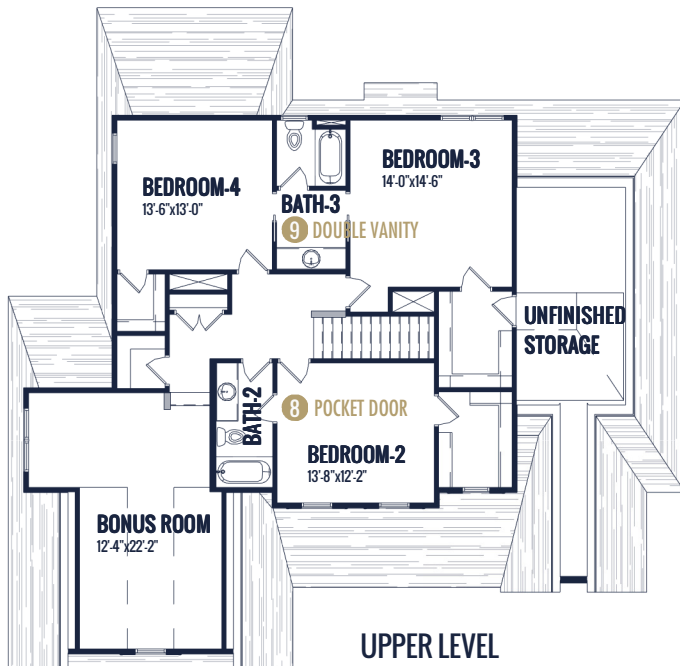
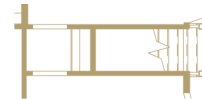
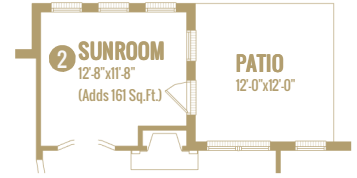
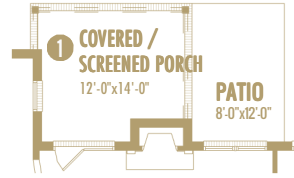
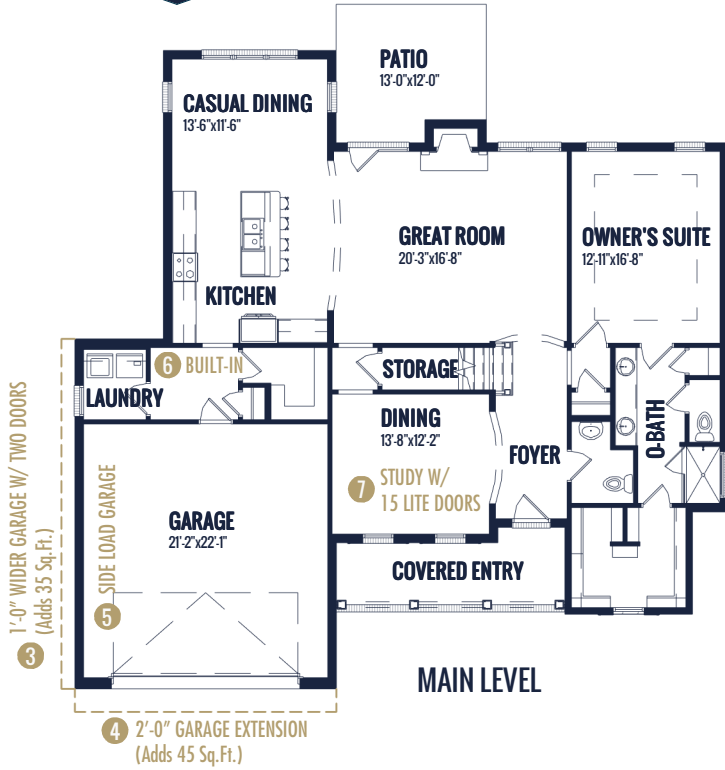
Watercolors, illustrations, and floor plans are for marketing purposes only and are subject to change at builder's discretion. Square footage is outside veneer and should be independently verified. This is not a legal document.  
 9/28/2021 4:40:11 PM

3411 Healy Drive, Suite A | **Winston-Salem, NC 27103** | 336-659-8211  
 4330 Southport Supply Rd, Suite 101 | **Southport, NC 28461** | 910-363-1620

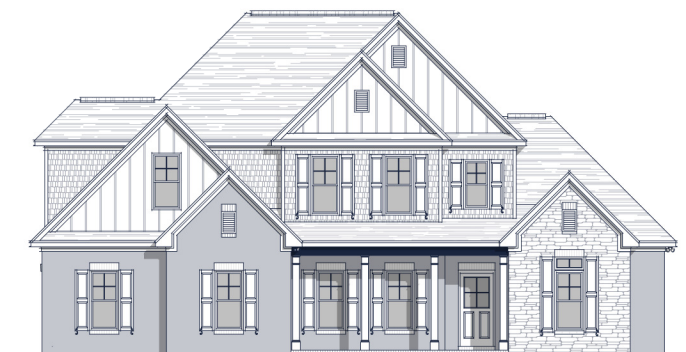


**IsenhourHomes.com**

# FLOOR PLAN: BRADLEY TRANSITIONAL



3 1'-0" WIDER GARAGE W/ TWO DOORS  
(Adds 35 Sq. Ft.)



5 SIDE LOAD GARAGE

Watercolors, illustrations, and floor plans are for marketing purposes only and are subject to change at builder's discretion. Square footage is outside veneer and should be independently verified. This is not a legal document.  
9/28/2021 4:39:44 PM